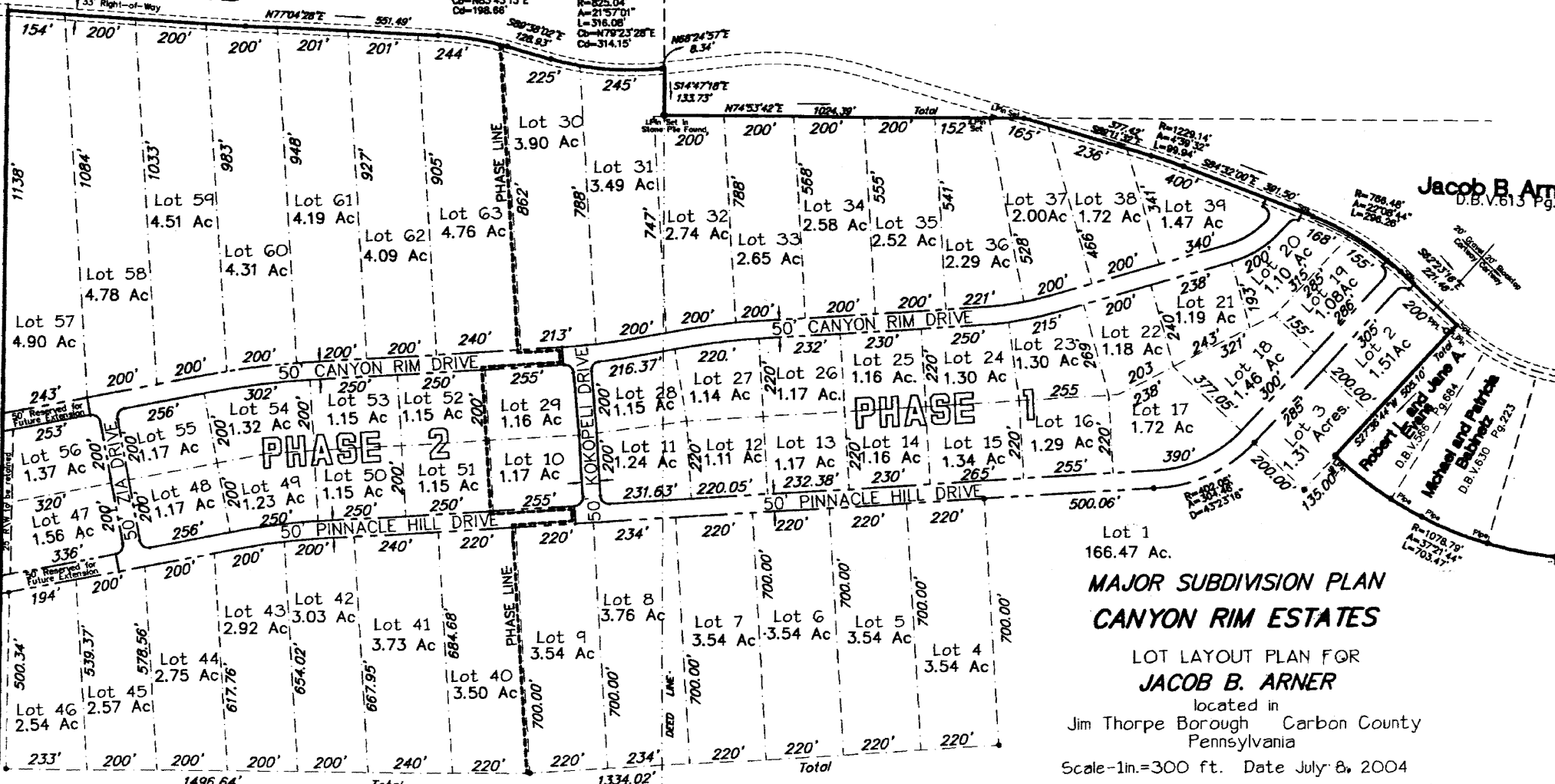


**FLAGSTAFF ROAD**

**Jacob B. Arner**  
D.B.V.546 Pg.441

R=858.25'  
A=1317.30'  
L=199.10'  
C<sub>D</sub>=N83°43'13"E  
C<sub>D</sub>=198.66'

R=825.04'  
A=2157°01'  
L=316.08'  
C<sub>D</sub>=N79°23'28"E  
C<sub>D</sub>=314.15'



**Jacob B. Arner**  
D.B.V.615 Pg.1

**PHASE 1**

**PHASE 2**

**MAJOR SUBDIVISION PLAN**  
**CANYON RIM ESTATES**

LOT LAYOUT PLAN FOR  
**JACOB B. ARNER**

located in  
Jim Thorpe Borough Carbon County  
Pennsylvania

Scale-1in.=300 ft. Date July 8, 2004

**VICTOR R. GEIGER, P.L.S.**

2545 Church Hill Road, Leighton Pa. 18235  
Tel. (570)-386-2234